

How to set up the IP address by the printer tool

Step 1 : download the printer tool from our website.

http://www.argox.com/product/P4-250/#tab-ywtm_2968

Barcode Scanners
Mobile Computers
Discontinued Products

PRODUCT TAGS

- Printer-Cerner-certification
- Printer-Direct-thermal
- Printer-Mobile printer
- Printer-Printing-width-2"
- Printer-Printing-width-3"
- Printer-Printing-width-4"
- Printer-Printing-width-6"
- Printer-Ribbon-length-100m
- Printer-Ribbon-length-300m
- Printer-Ribbon-length-360m

INFORMATION GENERAL SPECIFICATIONS BROCHURE USER MANUAL **SOFTWARE** DRIVERS

BARTENDER UL 2016
Windows Vista, Windows 7, Windows 8 and 8.1, and Windows 10. Windows Server 2008, 2008 R2, 2012, 2012 R2, and 2016. 32-bit and 64-bit (x64) editions. [DOWNLOAD FILE](#)

BARTENDER UL 10.1 XP
Windows XP [DOWNLOAD FILE](#)

PRINTER TOOL V1.0.9.243
.NET FRAMEWORK 3.5 in Windows XP Windows Vista, Windows 7, Windows 8 and 8.1, and Windows 10. Windows Server 2008, 2008 R2, 2012, 2012 R2, and 2016. 32-bit and 64-bit (x64) editions. [DOWNLOAD FILE](#)

COMMAND LIBRARY V4.10
Command Library V4.10 software developing tool for professional users. Support: Windows 10, Windows 8, Windows 7, Window Vista and 64bit/32bit editions. [DOWNLOAD FILE](#)

Step 2 : Set up the IP address by the printer tool.

You need to connect the printer and use printer tool to setup the IP address by usb cable.

Once the connection builds up, you can check the printer status and information on the screen.

Printer Tool

File Setting Help

USB Setting | ARGOX D4-250 PPLZ | \\?usb#vid_1664&pid_0e10#704b50557969#fa5dcbf10-6530-11d2-901f-00c04fb951ed | **Get Status** ON LINE (Ready)

D4-250 PPLZ 203 DPI Sync **Get Status** ON LINE (Ready)

View

- Parameter Setting
- Download
- Tool
- Search
- Font

General COM LAN IPv6 WLAN Bluetooth

Send Get

TCP/IP

IP Address: 192 . 168 . 10 . 20

Subnet Mask: 255 . 255 . 255 . 0

Gateway: 0 . 0 . 0 . 0

Current TCP/IP

IP Address: 0 . 0 . 0 . 0

Subnet Mask: 0 . 0 . 0 . 0

Gateway: 0 . 0 . 0 . 0

SNMP Trap

Trap1: Disable

Trap2: Disable

Protocol

Socket: Enable

Port Number: 9100

SNMP: Enable

Server

DHCP: Enable

Host Name:

Client ID: FFFFFFFFFFFFFFFFFFFFFFFFFFFFFFFF

If it correctly connect, the information would show up

Press the "Get status" to make sure the printer is ready.

Step 3 : Do one of the following to configure your TCP/IP settings:

If you have a static IP address, disable **DHCP** and fill the **IP Address**, **Subnet Mask** and **Gateway** box under **TCP/IP** according to your network settings and click **Send**.

TCP/IP

IP Address:	155 . 181 . 255 . 28
Subnet Mask:	79 . 210 . 220 . 8
Gateway:	255 . 252 . 234 . 220

If you don't have a static IP address, make sure **DHCP** is enabled and click **Send**.

Server

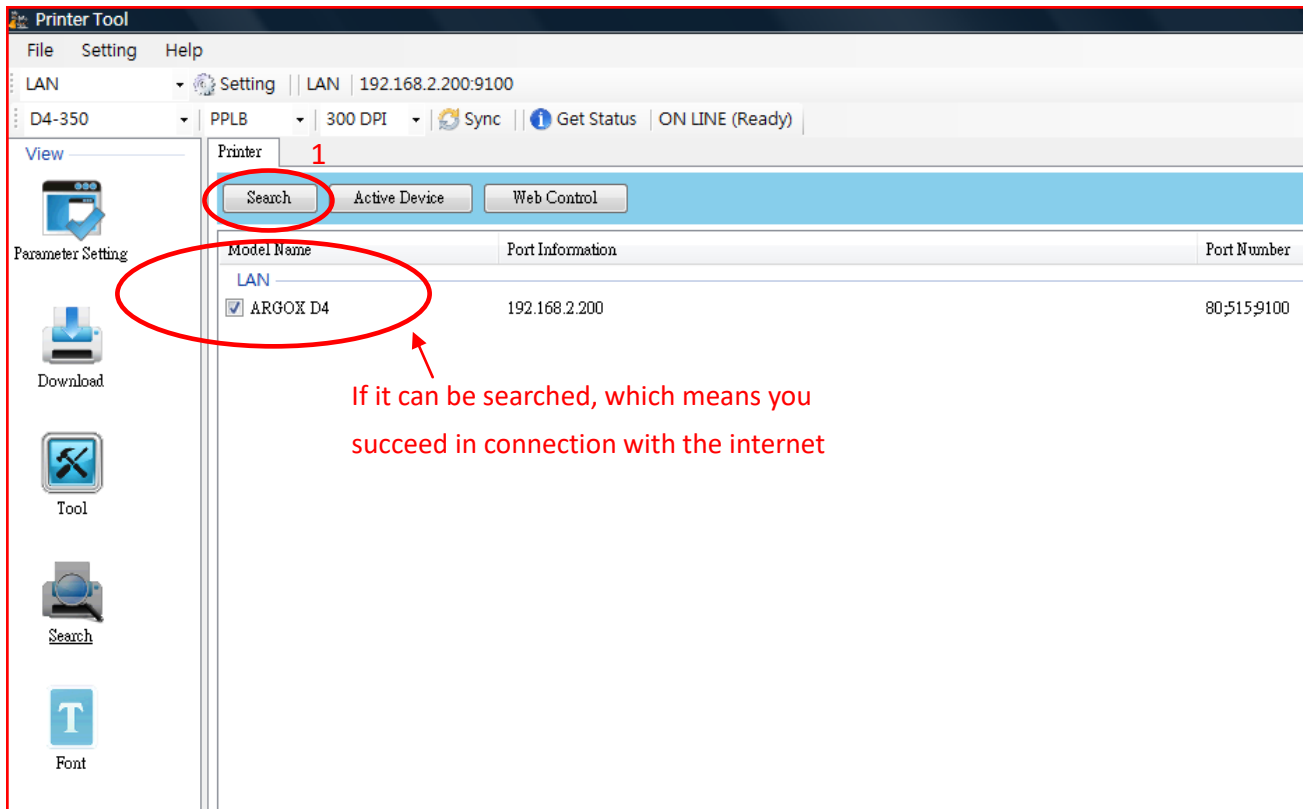
DHCP:	Enable
Host Name:	
Client ID:	FFFFFFFFFFFFFFFFFFFFFFFFFFFFFFFF

After your printer restarts, click **Get** to get the TCP/IP information of your printer. If you are using a static IP address, you'll get the same TCP/IP settings as it is in the previous step; if you are using DHCP, The DHCP server will automatically populate the **IP Address**, **Subnet Mask** and **Gateway** boxes under **Current TCP/IP**.

The screenshot shows a printer's network configuration interface with tabs for General, COM, LAN, IPv6, WLAN, and Bluetooth. The LAN tab is active. At the top, there are 'Send' and 'Get' buttons. The interface is divided into several sections:

- TCP/IP:** IP Address: 192 . 168 . 10 . 20; Subnet Mask: 255 . 255 . 255 . 0; Gateway: 0 . 0 . 0 . 0
- Current TCP/IP:** IP Address: 192 . 168 . 1 . 140; Subnet Mask: 255 . 255 . 240 . 0; Gateway: 192 . 168 . 0 . 1
- SNMP Trap:** Trap1: Disable; Trap2: Disable
- Protocol:** Socket: Enable; Port Number: 9100; SNMP: Enable
- Server:** DHCP: Enable; Host Name: ; Client ID: FFFFFFFFFFFFFFFFFFFFFFFFFFFFFFFFFF

Step 4 : Disconnect the usb cable and switch to the Ethernet cable to test whether it can connect with your internet.



How to check the Ethernet address on the PC site.

1. search the "cmd" in the start menu
2. key in "ipconfig"

